



Environmental Management System

July 2023

An Environmental Management System is one of the most efficient ways to reduce our environmental impact and will increasingly in future be sought after by stakeholders and environmental bodies. Our charity will benefit now by implementing an Environmental Management System (EMS).

The Purpose of an Environmental Management System

An environmental management system is a framework designed to help us monitor, control, and continuously improve our environmental performance. We have utilised the framework as an organising principle, in order to structure our environmental strategy, and this will be related closely to the principles defined in our charity 'Sustainability Policy'.

We will use our Environmental Management Systems (EMS), to reduce our organisation's environmental impacts and improve operating efficiencies, while demonstrating to stakeholders and interested parties that real action is being taken.

As a large part of the EMS relates directly to factors under the direct control of the Pinetrees Centre Management, the next stage of our management system is to arrange a meeting (assuming we are successful in the bid) with Centre Management to examine areas such as existing environmental risk assessments, clean electricity, water consumption, waste generation and disposal, carbon emissions, and effective local biodiversity.

Our EMS will help us identify, manage, monitor, and control our environmental performance in a holistic manner. For instance, new risk assessments will be undertaken, if not already available, to help with Centre Management, to identify the context of our environmental impact. Controls will then be put in place to help manage these risks, and together with Centre Management, strategies designed to reduce them.

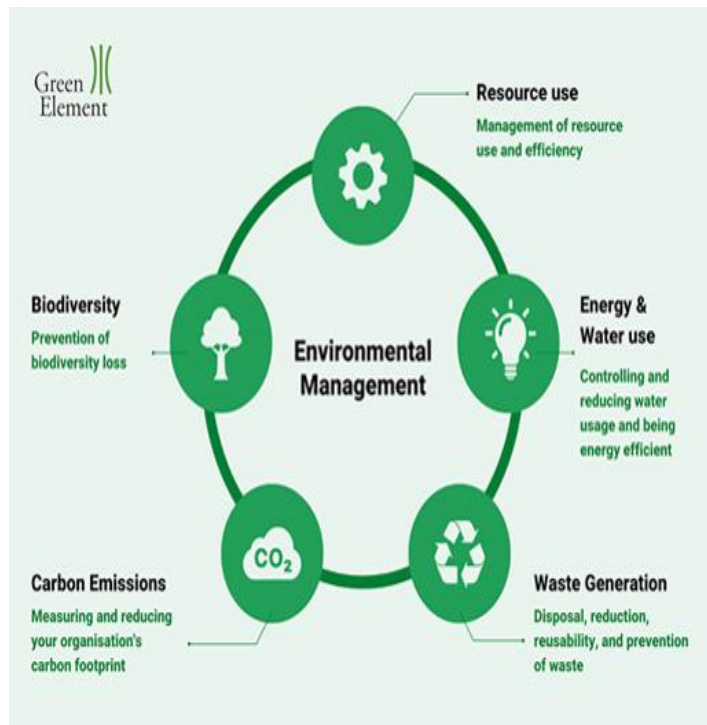


Figure 1: Pictorial Representation of the elements of our Environmental Management System

ISO14001:2015 We will work slowly to accreditation under ISO 14001 as the most recognised standard within environmental management although the cost will be prohibitive for at least the next 2 years.

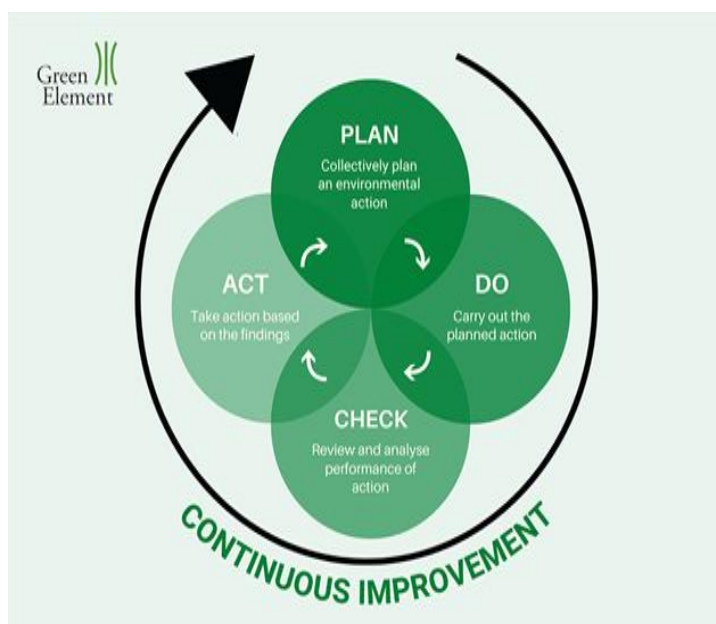


Figure 2: Plan Do Check Act Continuous Cycle

We will adopt a Plan Do Check Act (PDCA) Methodology in our Environmental Management System

The PDCA methodology is a four-step process geared toward carrying out desired change, with the key focus being on continuous improvement. Adhering to this methodology will guide The Kelly Foundation through the strategies we look to implement.

Plan

We will recognise and plan environmental action. The action will be guided by the number of assessments we will have undertaken into our environmental impact, together with centre management, and any opportunities that we may have together identified for improvement.

Do

We will then carry out the planned action. We will begin small-scale and in a controlled environment to account for any unpredicted difficulties.

Check

We will then review and analyse the performance of the planned action(s) and identify what we have learned from the process.

Act

We will then act on what we have learned in the previous steps. If our initial plan proves not to be effective, then we will go through the PDCA cycle again and adjust our plan and actions. If the plan is successful, we will start looking to incorporate what we have learned into organisational changes for the charity.

As a relatively new organisation our EMS will provide the framework and the foundation for us to begin analysing and understanding our organisation's impact on the environment, allowing us to put in place a plan to take the necessary actions to improve our performance in this regard.



John Stooke

Chairman

The Kelly Foundation

www.4kelly.org

Tel 07836 609369

